



# NOTSPOT

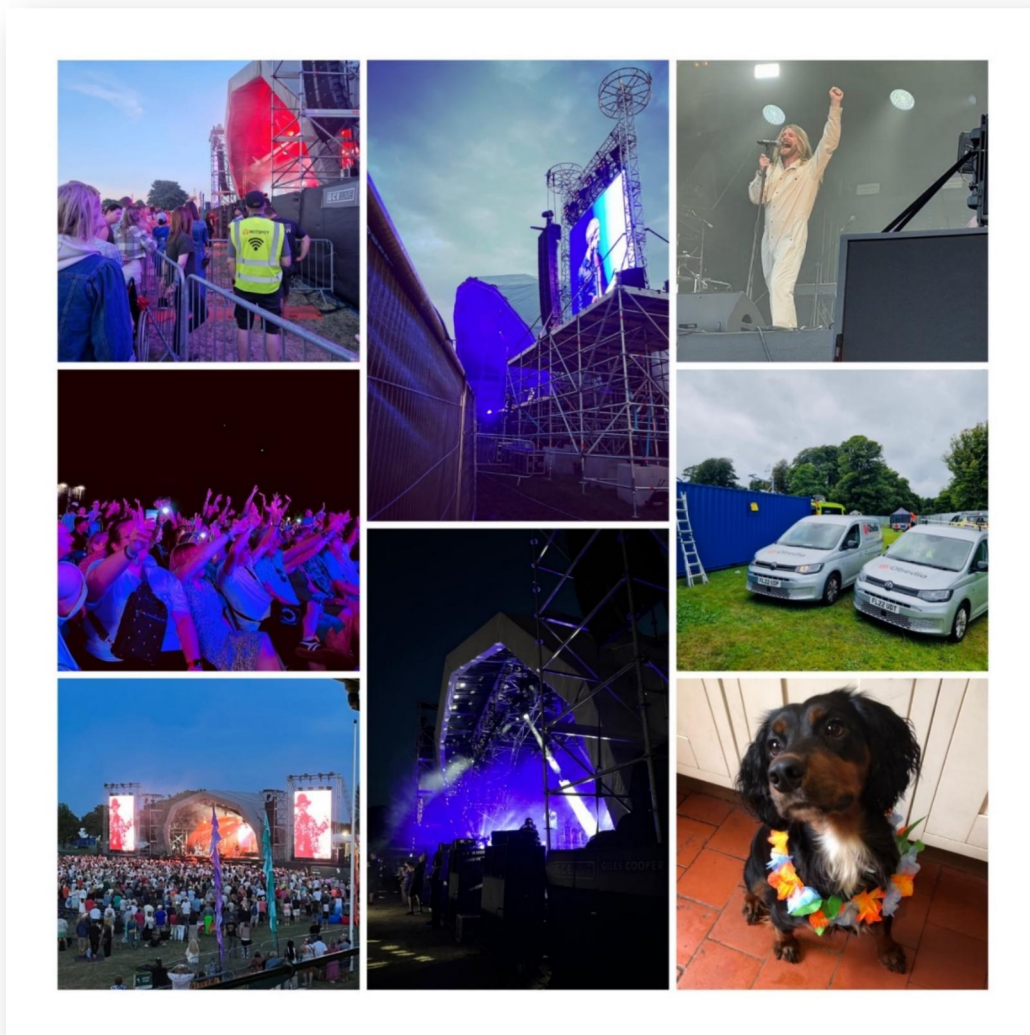
B R O A D B A N D

☎ 0333 322 3434

✉ [teamobedio@obedio.com](mailto:teamobedio@obedio.com)

## WiFi | LAN | BACKHAUL

Supplying reliable, secure, managed, super fast connectivity where others can't



# OUR HISTORY

**The Hard-to-Reach Business, Domestic and Events Provider**



**Notspot Broadband Ltd** was founded in 2009 with the mission to provide super-fast connectivity for hard-to-reach places in the UK. We were quickly awarded BDUK status and selected as a preferred choice to the Government for areas where Fibre couldn't be installed in a reasonable time frame.

Bringing the Internet to hard-to-reach places with the capacity to instruct and lean on the **Obedio** family for their expertise when and where required.

We work in private households, businesses and with every county council in the UK to bring high-speed internet access to rural and difficult to reach areas that have been left off the BDUK Fibre fulfilment map. The company's goal is to bridge the digital divide, allowing everyone access to the same level of connectivity. With cutting-edge technology and commitment to customer service, Notspot Broadband is a leader in providing reliable broadband services for those not served by widely available standard offerings.



Part of our success can be attributed to our own brand of products we deploy and to date, we are proud to say, over 5000 customers have benefited from a Notspot Broadband connection.

product line to provide distributed WIFI solutions to commercial and domestic sites across the UK.

Trained and licenced to deploy and operate on 5Ghz, 60Ghz and 80Ghz frequencies, we are partnered with solution providers such as Cisco, Ubiquiti, MikroTik, Grandstream and Teltonika.

Our commitment to providing fully licenced infrastructures and with certified engineers deploying them, differentiates us and we think establishes us as unique in our offerings.

We are licensed by Ofcom via our **JELLED**



**MikroTik**  
Certified Consultant

**Ofcom**



**GRANDSTREAM**



# BACKHAUL

## Our Backhaul Partners



From fixed line fibre solutions to modern low earth orbit cluster satellites, to old school but reliable geostationary satellites, to modern WISP point to point solutions, we partner with lots of accredited backhaul suppliers. All of which can provide us with reliable, cost effective, deliver anywhere solutions that are the backbone of all our offerings.



We provide low orbit and geostationary satellite services for the domestic market and we are authorised for commercial business offerings via Starlink and OneWEB.



solutions.

In many of our installations we have a combination of some or all of these to provide multi path redundant

With the power to bring in our Obedio family members **Upbyte** where fibre is available. Our Fibre solutions are Licensed by BT and Openreach to install SoGEA and Fibre solutions for commercial, domestic and event requirements.



We map and apply for all related licensing for every install and event we support, bringing the best of breed backhaul to every event we support.



Need a phone? Our **UtterVOIP** product line uses Cisco architecture built on the industry standard BT VoIP UK infrastructure.

We deploy VoIP solutions for event production teams and much more, either as physical phones or smartphone App solutions working on our WiFi infrastructure. Designing systems that accommodate small offices to large corporate environments, large events and festivals wherever and whenever they need us.





## SUPPORT

On the Phone and at Events



Our onsite engineers are backed up by our **support centre** based in the beautiful Peak District provides incident management, pre-sales advice, order processing via our state-of-the-art ticket management system. However, we are never more than direct dial phone call away for our customers and potential customers, something we think is unique is today's automated support world.



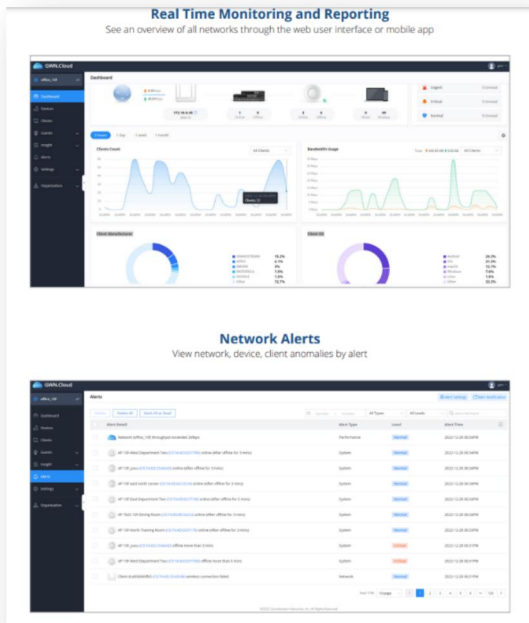
For events we support we provide teams of engineers on site with their own mobile home accommodation, essentially providing a mobile support office with cover that matches the requirements of the festival and the services it provides.

From the initial design to build, to the final hand over of ongoing support by our team, we also serve as third line and escalation points during the live phase.



# MONITORING

Our Dedicated Monitoring Solutions



We provide a local and cloud-based platform for Wi-Fi point to point, Wi-Fi access points, routers, and switches. This enables a live view and control the whole network from end-to-end with one easy to access platform.

We can quickly deploy and secure via a cloud mobile app or a web browser interface, then manage the whole thing from the same interface. Tracking the network's performance in real-time, providing alerts, statistics, and reports that can pro-actively get us ahead of issues and fix them quickly.

Our platform is completely scalable and robust with no limits on the number of sites or APs and can be accessed from anywhere in the world.



# NOTSPOT

B R O A D B A N D

☎ 0333 322 3434

✉ [teamobedio@obedio.com](mailto:teamobedio@obedio.com)



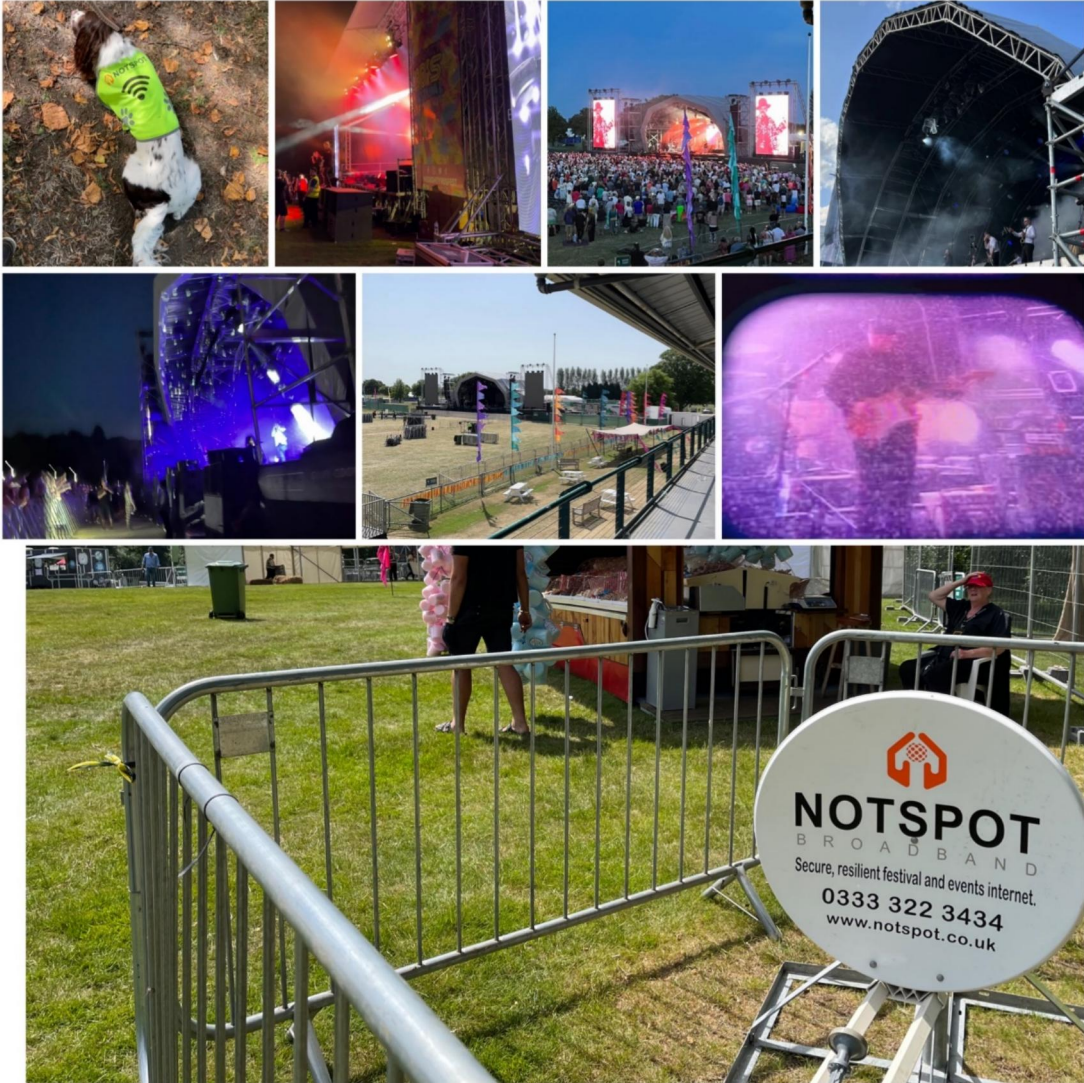


# NOTSPOT

B R O A D B A N D

☎ 0333 322 3434

✉ [teamobedio@obedio.com](mailto:teamobedio@obedio.com)





# NOTSPOT

B R O A D B A N D

☎ 0333 322 3434

✉ [teamobedio@obedio.com](mailto:teamobedio@obedio.com)



# Obedio

INTERNET SERVICES